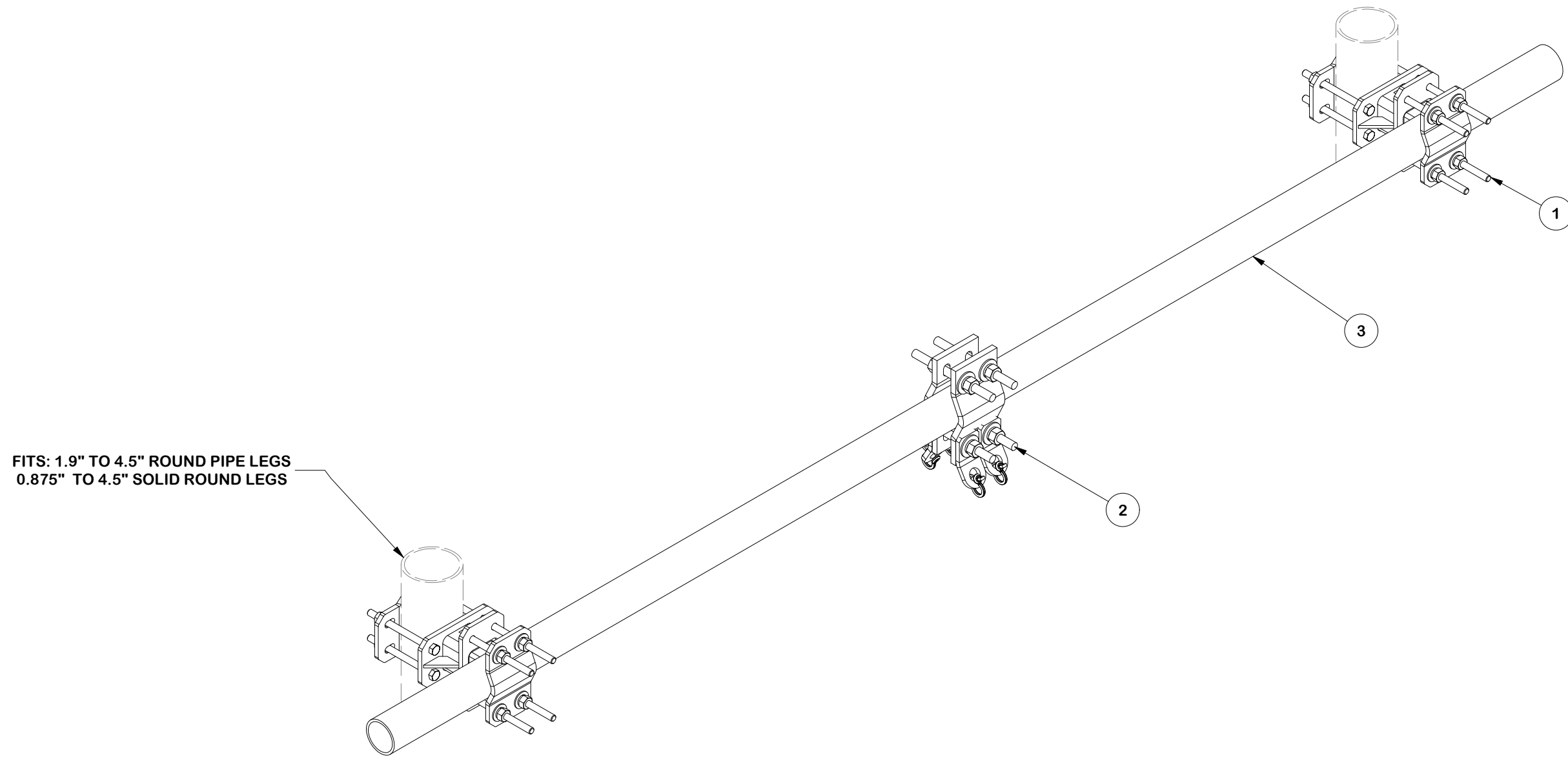


PARTS LIST									
ITEM	QTY	PART NO.	BOX NO.	PART DESCRIPTION	LENGTH	UNIT WT.	NET WT.		
1	2	SOCX3-U	P-SOCX3-U	3" UNIVERSAL STANDOFF CROSSOVER KIT		18.11	36.23		
2	1	CHB-DVC4	P-CHB-DVC4	CABLE HANGER BRACKET DUAL V-CLAMP W/ FOUR TABS AND 1/4" SHACKLES		19.44	19.44		
3	1	P30120		2 1/2" SCH. 40 PIPE (2.875" O.D. X 0.203" - A53 GR. B Fy=35 ksi min)	120 in	61.55	61.55		
						<b>TOTAL WT. #</b>	<b>113.29</b>		



**FINISH:**  
HOT DIP GALVANIZED.

**TOLERANCE NOTES**

TOLERANCES ON DIMENSIONS, UNLESS OTHERWISE NOTED ARE:  
 SAWED, SHEARED AND GAS CUT EDGES ( $\pm 0.030"$ )  
 DRILLED AND GAS CUT HOLES ( $\pm 0.030"$ ) - NO CONING OF HOLES  
 LASER CUT EDGES AND HOLES ( $\pm 0.010"$ ) - NO CONING OF HOLES  
 BENDS AND ANGLES ARE  $\pm 1/2$  DEGREE  
 ALL OTHER MACHINING ( $\pm 0.030"$ )  
 ALL OTHER ASSEMBLY ( $\pm 0.060"$ )

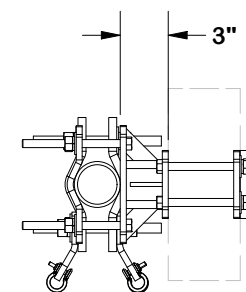
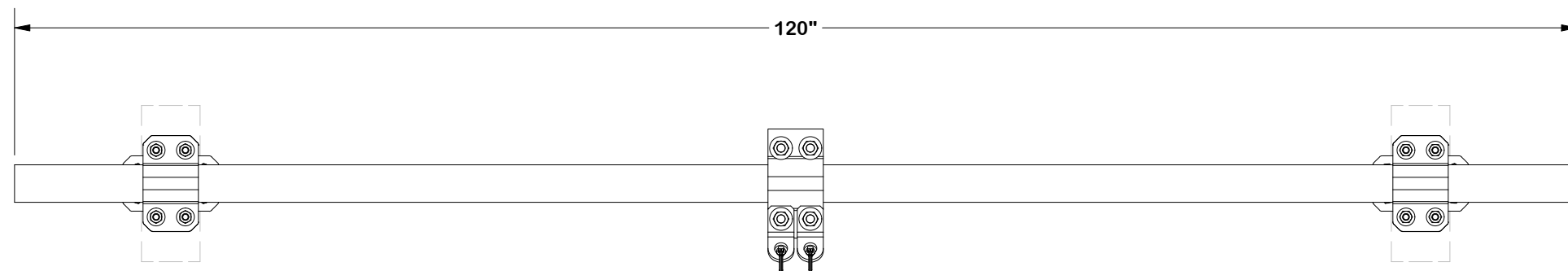
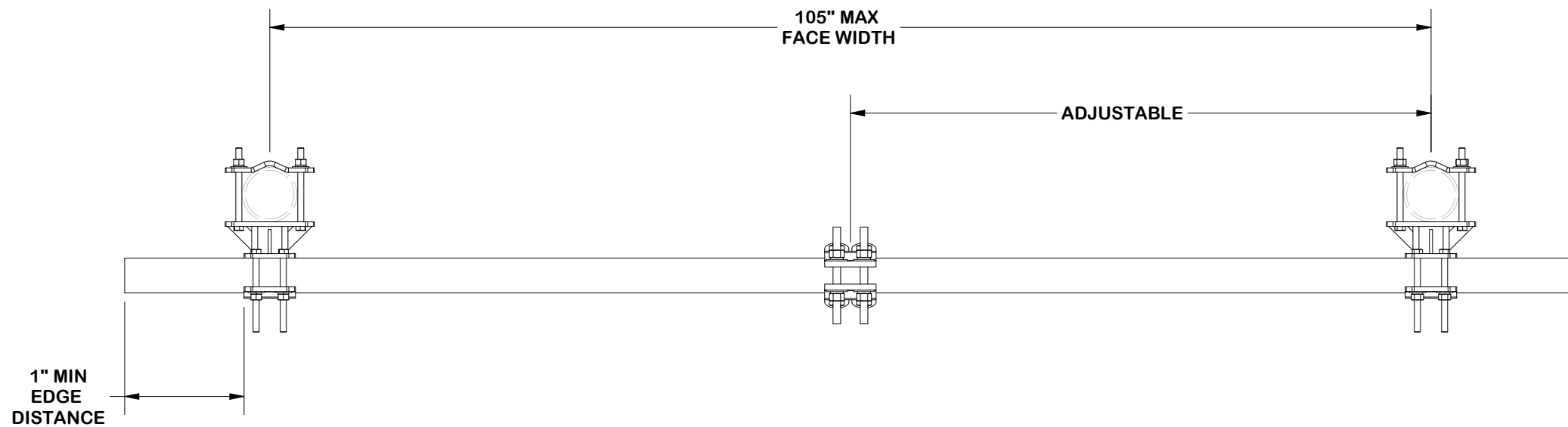
PROPRIETARY NOTE:  
 THE DATA AND TECHNIQUES CONTAINED IN THIS DRAWING ARE PROPRIETARY INFORMATION OF VALMONT INDUSTRIES AND CONSIDERED A TRADE SECRET. ANY USE OR DISCLOSURE WITHOUT THE CONSENT OF VALMONT INDUSTRIES IS STRICTLY PROHIBITED.

DESCRIPTION  
**3" STANDOFF CROSSOVERS  
 W/ 2-7/8" X 120" PIPE  
 MOUNT INTEGRATED LINE SUPPORT**

**SITE PRO 1**  
 A valmont COMPANY  
 Engineering Support Team:  
 1-888-753-7446

CPD NO. <b>NCS</b>	DRAWN BY <b>SDR 1/23/2026</b>	ENG. APPROVAL <b>1/30/2026</b>
CLASS <b>87</b>	SUB <b>02</b>	DRAWING USAGE <b>CUSTOMER</b>
CHECKED BY <b>CSL 1/30/2026</b>		

PART NO. <b>SOCX3-3010-MILS</b>
DWG. NO. <b>SOCX3-3010-MILS</b>



**TOLERANCE NOTES**

TOLERANCES ON DIMENSIONS, UNLESS OTHERWISE NOTED ARE:  
 SAWED, SHEARED AND GAS CUT EDGES ( $\pm 0.030"$ )  
 DRILLED AND GAS CUT HOLES ( $\pm 0.030"$ ) - NO CONING OF HOLES  
 LASER CUT EDGES AND HOLES ( $\pm 0.010"$ ) - NO CONING OF HOLES  
 BENDS AND ANGLES ARE  $\pm 1/2$  DEGREE  
 ALL OTHER MACHINING ( $\pm 0.030"$ )  
 ALL OTHER ASSEMBLY ( $\pm 0.060"$ )

PROPRIETARY NOTE:  
 THE DATA AND TECHNIQUES CONTAINED IN THIS DRAWING ARE PROPRIETARY INFORMATION OF VALMONT INDUSTRIES AND CONSIDERED A TRADE SECRET. ANY USE OR DISCLOSURE WITHOUT THE CONSENT OF VALMONT INDUSTRIES IS STRICTLY PROHIBITED.

DESCRIPTION  
**3" STANDOFF CROSSOVERS  
 W/ 2-7/8" X 120" PIPE  
 MOUNT INTEGRATED LINE SUPPORT**

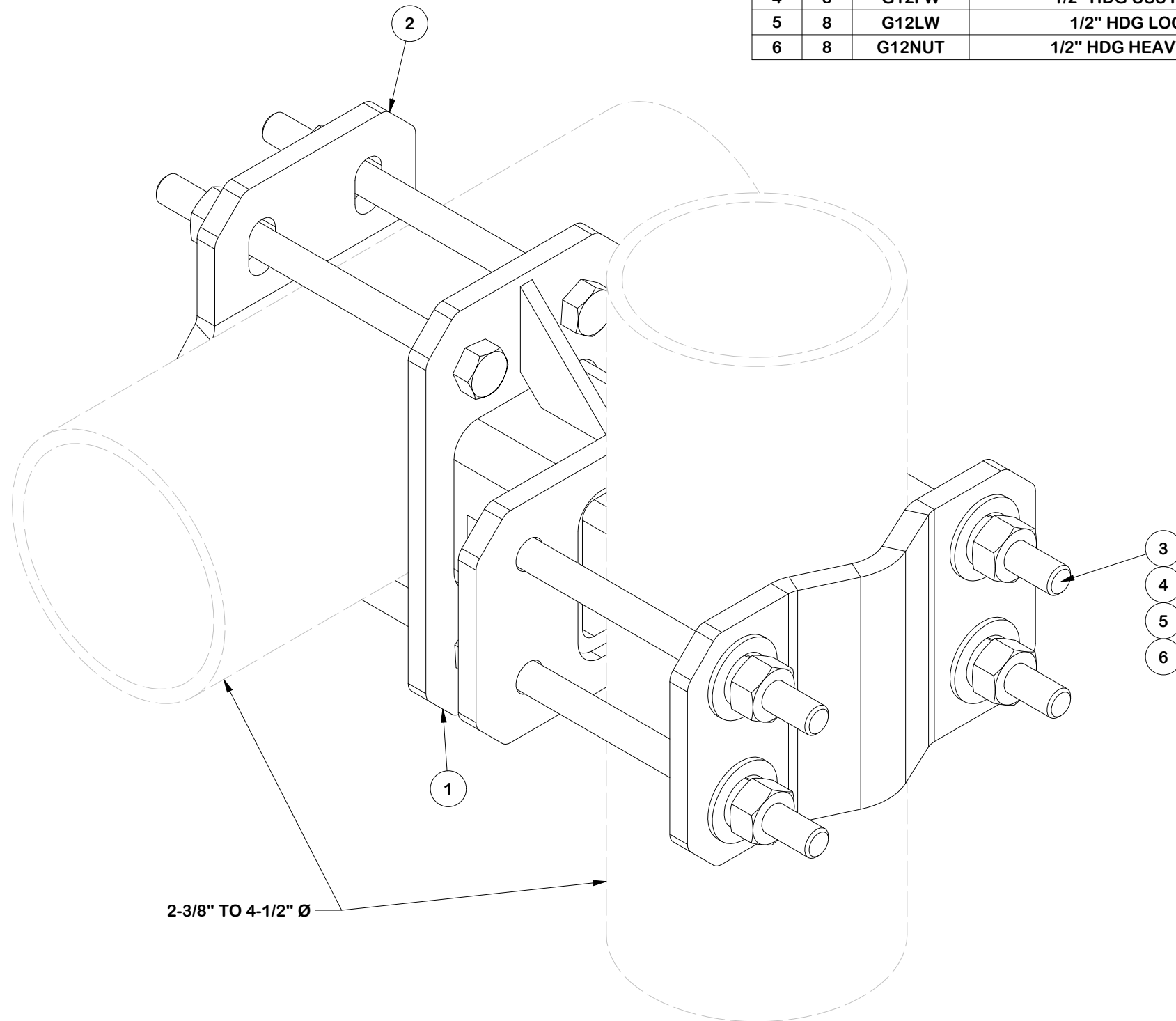
CPD NO. <b>NCS</b>	DRAWN BY <b>SDR 1/23/2026</b>	ENG. APPROVAL <b>1/30/2026</b>
CLASS <b>87</b>	SUB <b>02</b>	DRAWING USAGE <b>CUSTOMER</b>
	CHECKED BY <b>CSL 1/30/2026</b>	

**SITE PRO 1** Engineering Support Team:  
 1-888-753-7446  
 A valmont COMPANY

PART NO. <b>SOCX3-3010-MILS</b>	PAGE <b>2 OF 4</b>
DWG. NO. <b>SOCX3-3010-MILS</b>	

**NOTE: MAX TORQUE 35 LB-FT PER BOLT**

PARTS LIST						
ITEM	QTY	PART NO.	PART DESCRIPTION	LENGTH	UNIT WT.	NET WT.
1	1	X-SOCX3	3" STANDOFF CROSSOVER WELDMENT		7.22	7.22
2	2	X-SO12-CLS	V-CLAMP FOR 0.5" HARDWARE	7 9/16 in	3.33	6.66
3	8	G12065	1/2" x 6-1/2" HDG HEX BOLT GR5 FULL THREAD	6 1/2 in	0.41	3.28
4	8	G12FW	1/2" HDG USS FLATWASHER	3/32 in	0.03	0.27
5	8	G12LW	1/2" HDG LOCKWASHER	1/8 in	0.01	0.11
6	8	G12NUT	1/2" HDG HEAVY 2H HEX NUT	7/8 in	0.07	0.57
					<b>TOTAL WT. #</b>	<b>17.89</b>



**FINISH:**  
HOT DIP GALVANIZED.

**TOLERANCE NOTES**

TOLERANCES ON DIMENSIONS, UNLESS OTHERWISE NOTED ARE:  
 SAWED, SHEARED AND GAS CUT EDGES ( $\pm 0.030"$ )  
 DRILLED AND GAS CUT HOLES ( $\pm 0.030"$ ) - NO CONING OF HOLES  
 LASER CUT EDGES AND HOLES ( $\pm 0.010"$ ) - NO CONING OF HOLES  
 BENDS AND ANGLES ARE  $\pm 1/2$  DEGREE  
 ALL OTHER MACHINING ( $\pm 0.030"$ )  
 ALL OTHER ASSEMBLY ( $\pm 0.060"$ )

PROPRIETARY NOTE:  
THE DATA AND TECHNIQUES CONTAINED IN THIS DRAWING ARE PROPRIETARY INFORMATION OF VALMONT INDUSTRIES AND CONSIDERED A TRADE SECRET. ANY USE OR DISCLOSURE WITHOUT THE CONSENT OF VALMONT INDUSTRIES IS STRICTLY PROHIBITED.

DESCRIPTION  
**3" STANDOFF CROSSOVERS  
 W/ 2-7/8" X 120" PIPE  
 MOUNT INTEGRATED LINE SUPPORT**

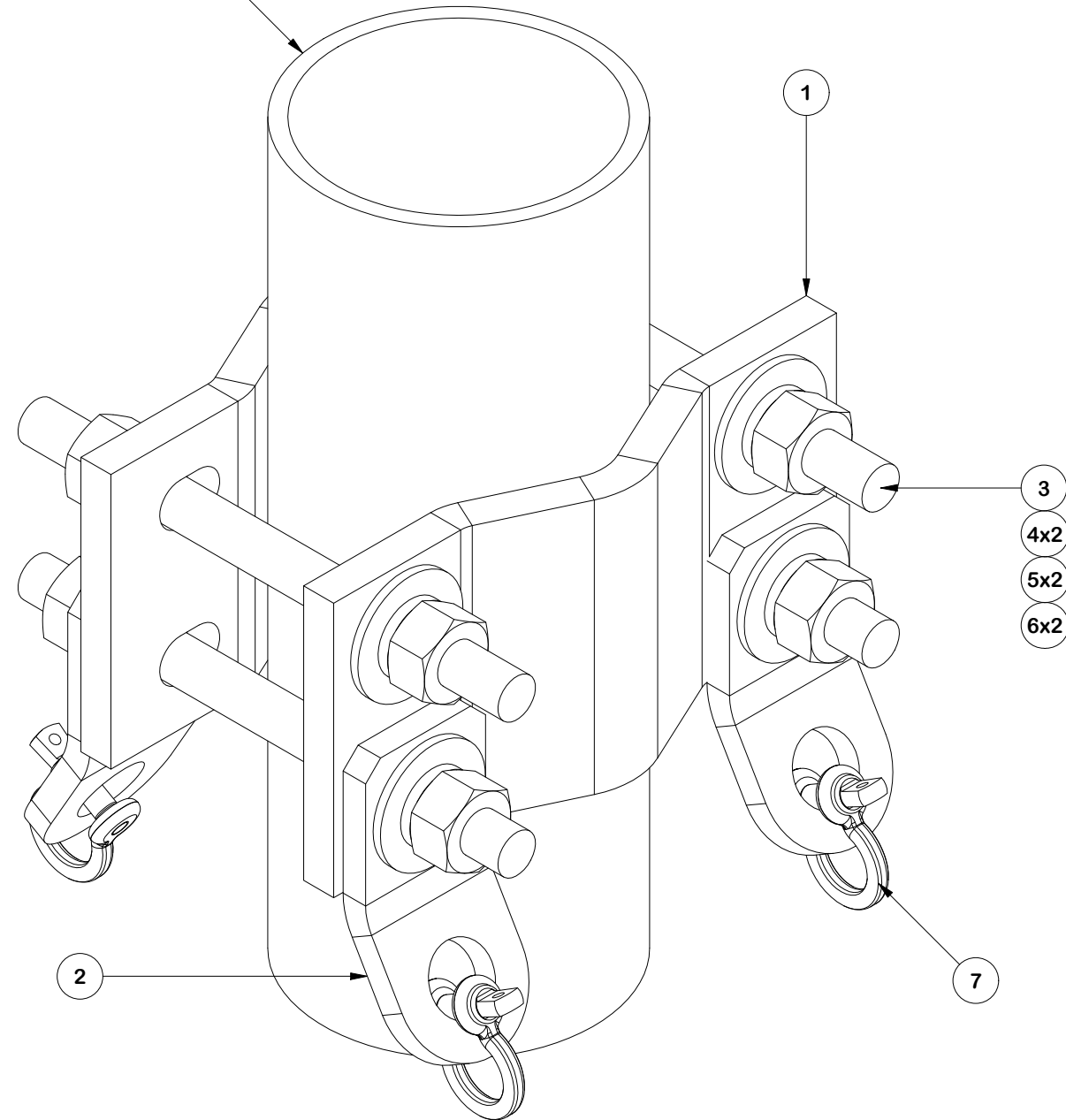
**SITE PRO 1**  
 A valmont COMPANY  
 Engineering Support Team:  
**1-888-753-7446**

REV	DESCRIPTION OF REVISIONS	CPD	BY	DATE
A	REVISED X-SOCX3 AND CHANGED TO 1/2" HW	SP1	SDR	8/4/2025
<b>REVISION HISTORY</b>				

CPD NO. <b>NCS</b>	DRAWN BY <b>SDR 1/23/2026</b>	ENG. APPROVAL <b>1/30/2026</b>
CLASS <b>87</b>	SUB <b>02</b>	DRAWING USAGE <b>CUSTOMER</b>
CHECKED BY <b>CSL 1/30/2026</b>		

PART NO. <b>SOCX3-U</b>	<b>3 OF 4</b> PAGE
DWG. NO. <b>SOCX3-3010-MILS</b>	

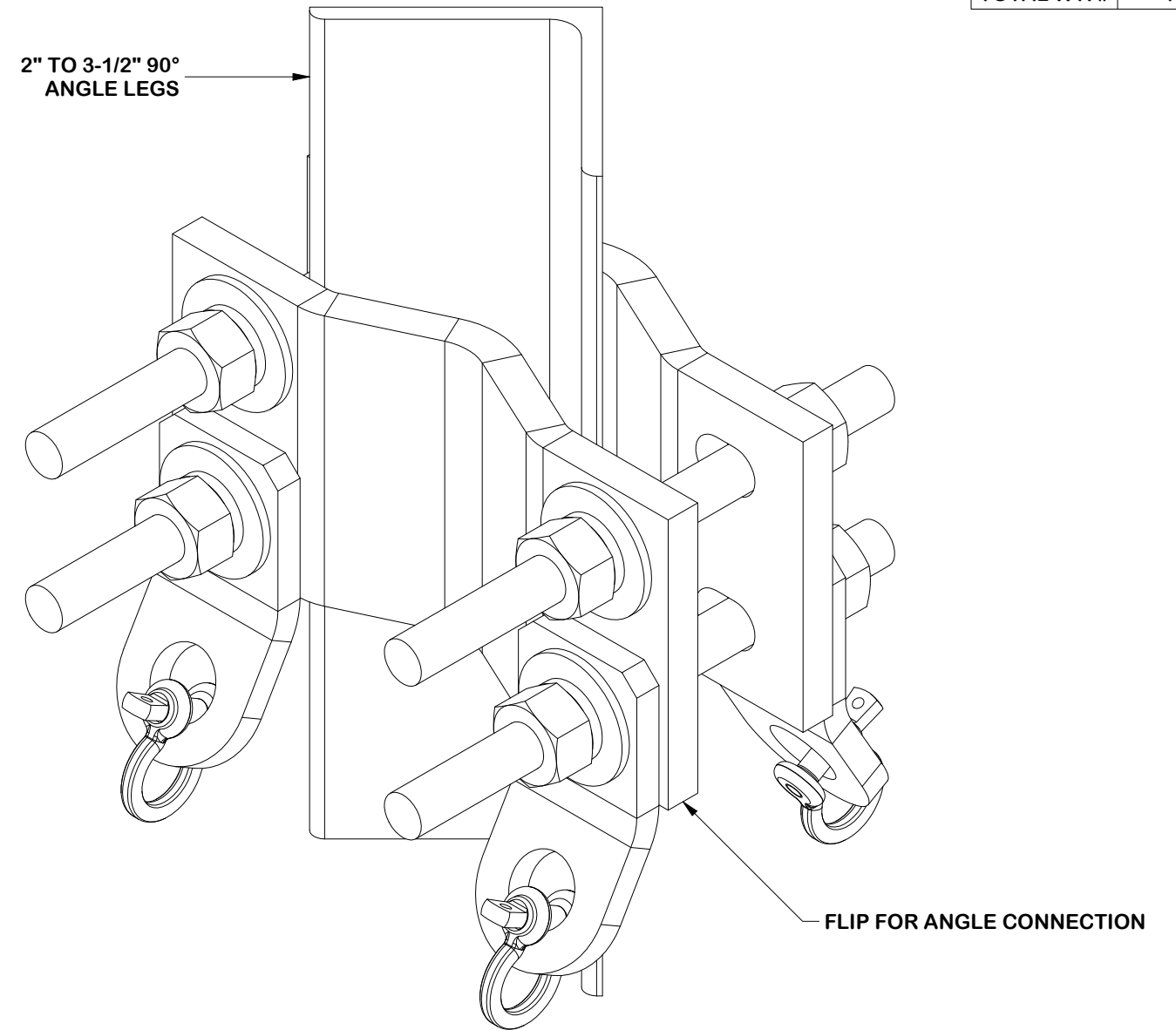
1.9"Ø TO 4.5"Ø  
ROUND MEMBERS



**ROUND LEG CONNECTION**

PARTS LIST						
ITEM	QTY	PART NO.	PART DESCRIPTION	LENGTH	UNIT WT.	NET WT.
1	2	V-CLAMP	LARGE V-CLAMP	8 21/32 in	5.55	11.09
2	4	X-TOAB-BPL	TIE-OFF ANCHOR BRACKET BENT PLATE	2 in	0.83	3.33
3	4	G58R-8	5/8" x 8" THREADED ROD (HDG.)		0.70	2.79
4	8	G58FW	5/8" HDG USS FLATWASHER	1/8 in	0.07	0.56
5	8	G58LW	5/8" HDG LOCKWASHER		0.03	0.21
6	8	G58NUT	5/8" HDG HEAVY 2H HEX NUT		0.13	1.04
7	4	SHK14	1/4" SCREW PIN SHACKLE		0.10	0.42
					<b>TOTAL WT. #</b>	<b>19.41</b>

2" TO 3-1/2" 90°  
ANGLE LEGS



**ANGLE LEG CONNECTION**

**FINISH:**  
HOT DIP GALVANIZED.

**TOLERANCE NOTES**

TOLERANCES ON DIMENSIONS, UNLESS OTHERWISE NOTED ARE:  
 SAWED, SHEARED AND GAS CUT EDGES ( $\pm 0.030"$ )  
 DRILLED AND GAS CUT HOLES ( $\pm 0.030"$ ) - NO CONING OF HOLES  
 LASER CUT EDGES AND HOLES ( $\pm 0.010"$ ) - NO CONING OF HOLES  
 BENDS AND ANGLES ARE  $\pm 1/2$  DEGREE  
 ALL OTHER MACHINING ( $\pm 0.030"$ )  
 ALL OTHER ASSEMBLY ( $\pm 0.060"$ )

PATENT INFORMATION: WWW.SITEPRO1.COM/PATENTS

PROPRIETARY NOTE:  
 THE DATA AND TECHNIQUES CONTAINED IN THIS DRAWING ARE PROPRIETARY INFORMATION OF VALMONT INDUSTRIES AND CONSIDERED A TRADE SECRET. ANY USE OR DISCLOSURE WITHOUT THE CONSENT OF VALMONT INDUSTRIES IS STRICTLY PROHIBITED.

DESCRIPTION  
**3" STANDOFF CROSSOVERS  
 W/ 2-7/8" X 120" PIPE  
 MOUNT INTEGRATED LINE SUPPORT**

CPD NO. <b>NCS</b>	DRAWN BY <b>SDR 1/23/2026</b>	ENG. APPROVAL <b>1/30/2026</b>
CLASS <b>87</b>	SUB <b>02</b>	DRAWING USAGE <b>CUSTOMER</b>
	CHECKED BY <b>CSL 1/30/2026</b>	



Engineering  
 Support Team:  
 sp1engineering@valmont.com

PART NO. <b>CHB-DVC4</b>
DWG. NO. <b>SOCX3-3010-MILS</b>